

Statewide Bacteria Impairment TMDL Fact Sheet

Connecticut DEEP has collaborated with EPA to develop a report detailing Total Maximum Daily Load (TMDL) analyses for bacteria impaired waterways. This document covers surface waters that are impaired by bacteria affecting shellfishing uses for saltwater bodies receiving TMDL reductions.

TMDL Overview

$$TMDL = Point Sources + Nonpoint Sources + Background + Margin of Safety$$

- A requirement under section 303(d) of the Federal Clean Water Act
- A management tool used to restore impaired waters by establishing the maximum amount of a pollutant that a waterbody can receive without adverse impacts to fish, wildlife, recreation, or other public uses
- Developed for waterbodies listed on the CT Impaired Waters List
- Provides guidance for responsible parties to use as a framework for developing a TMDL implementation plan

- The Statewide TMDL consists of a core document containing background information, implementation options, and other reference materials. This document was approved by EPA in October 2012. This 2013 posting is for five additional watershed specific appendices to the core document. Each appendix highlights detailed information on bacteria impairments and potential bacteria sources along with other watershed characteristics, such as land use and impervious cover percentages.
- These appendices address 43 impaired shellfish uses on 43 segments. Once the TMDLs are finalized, each of these impaired segments will be removed from category 5 (needing TMDL) of the Impaired Waters List (303 (d) report) and place in category 4a indicating that the TMDL is complete.
- All TMDL reduction goals are based on existing bacteria data and attaining water quality criteria within the CT Water Quality Standards
- All TMDL documents are available for download in PDF format at www.ct.gov/deep/tmdl
- Prior to adoption of the TMDL, the Department will consider comments that are received by **September 9, 2013**. Written comments should be directed to Mr. Chris Sullivan at christopher.sullivan@ct.gov or Connecticut Department of Energy and Environmental Protection, Bureau of Water Protection and Land Reuse, Planning and Standards Division, 79 Elm Street, Hartford, CT 06106-5127. Any project related questions should be directed to Chris Sullivan at (860) 424-3514.

Figure 1. Impaired Estuaries for the central portion of Connecticut included in this 2013 posting.

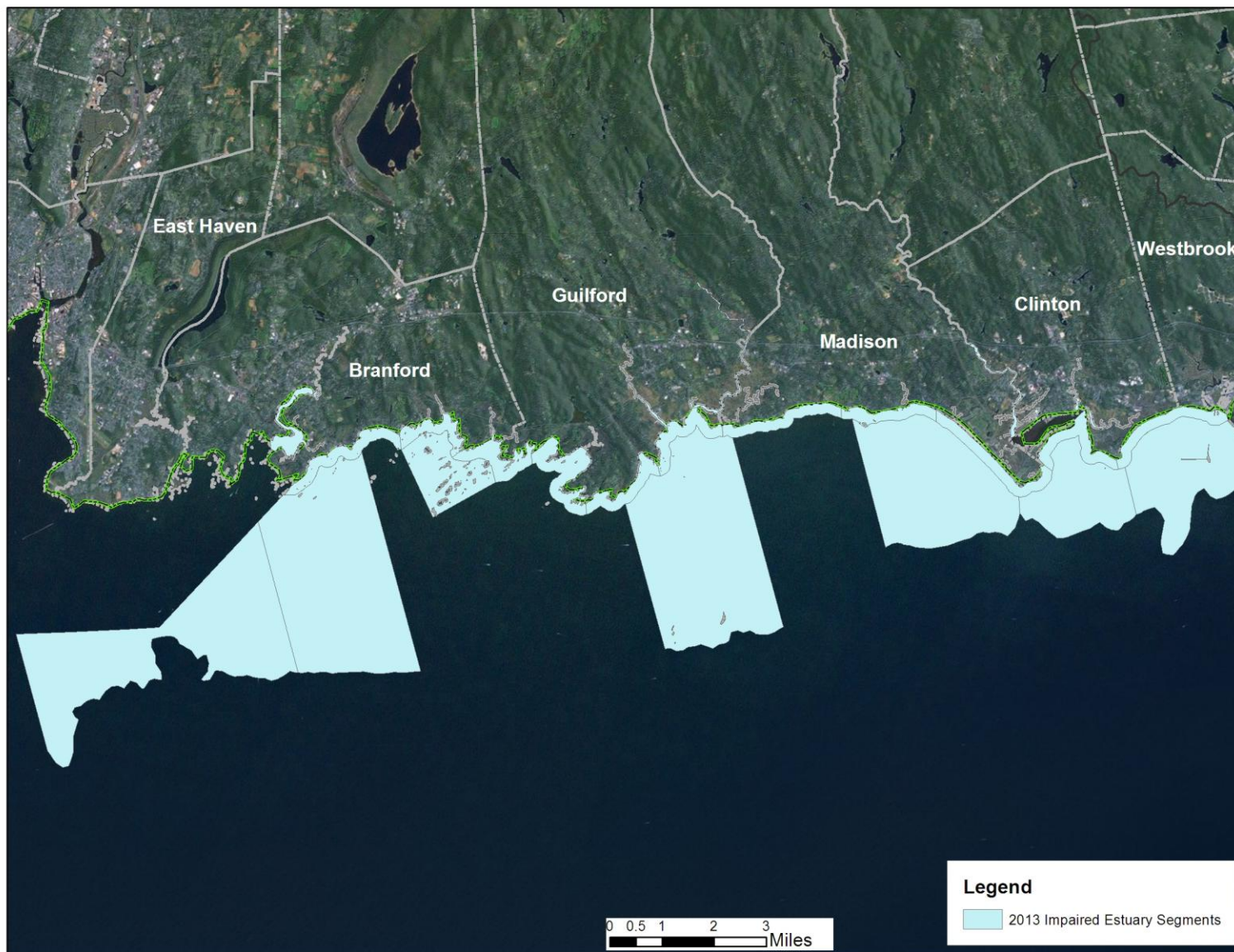


Figure 2. Impaired Estuaries for the eastern portion of Connecticut included in this 2013 posting.

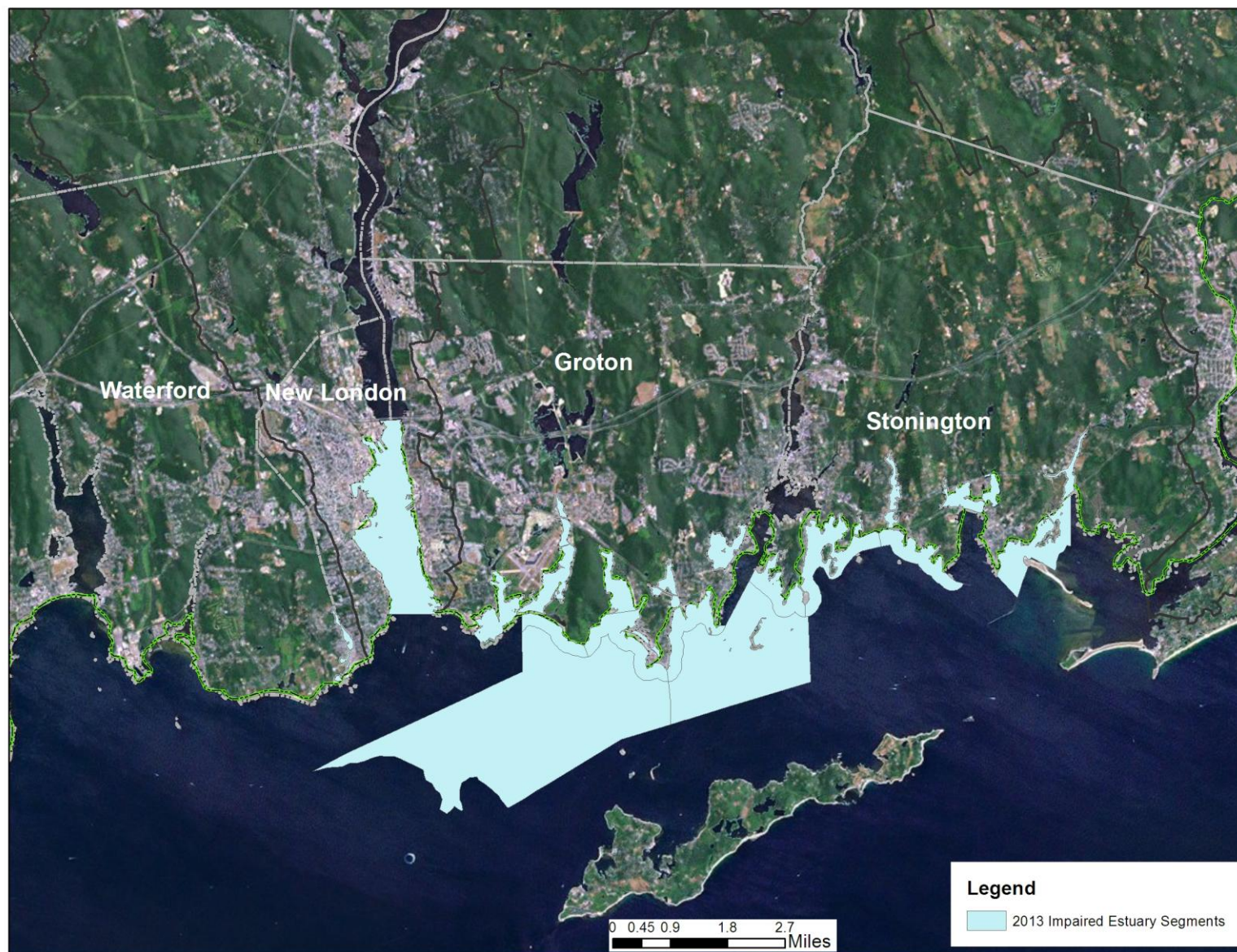


Table 1. Listing of segments included in this posting.

Appendix	Segment Name	305b #	Year Adopted
Estuary 8: Branford / East Haven	LIS CB Inner - Inner Branford Harbor	(CT-C1_009-SB)	2013
	LIS CB Shore - Stony Creek (East)	(CT-C2_011)	2013
	LIS CB Shore - Stony Creek (West)	(CT-C2_012)	2013
	LIS CB Shore - Indian Neck	(CT-C2_013)	2013
	LIS CB Midshore - Thimble Islands	(CT-C3_009-I)	2013
	LIS CB Midshore - Indian Neck	(CT-C3_010)	2013
	LIS CB Midshore - East Haven	(CT-C3_011)	2013
Estuary 9 Guilford/Madison	LIS CB Inner - East and Neck Rivers, Guilford	(CT-C1_006)	2013
	LIS CB Inner – West River, Guilford	(CT-C1_007)	2013
	LIS CB Shore – Hammonasset Beach, Madison	(CT-C2_005)	2013
	LIS CB Shore - Madison Beaches (East), Madison	(CT-C2_006)	2013
	LIS CB Shore - Madison Beaches (West), Madison	(CT-C2_007)	2013
	LIS CB Shore - Guilford Harbor, Guilford	(CT-C2_008)	2013
	LIS CB Shore - Indian Cove, Guilford	(CT-C2_009)	2013
	LIS CB Shore - Joshua Cove & Island Bay, Guilford	(CT-C2_010)	2013
	LIS CB Midshore - Hammonasset Beach area, Madison	(CT-C3_004)	2013
	LIS CB Midshore - Outer Guilford Harbor, Guilford	(CT-C3_006)	2013
Estuary 10 Clinton	LIS CB Inner-Hammonasset River	(CT-C1_003-SB)	2013
	LIS CB Inner - Hayden Creek, Clinton	(CT-C1_004-SB)	2013
	LIS CB Inner - Clinton Harbor	(CT-C1_005)	2013
	LIS CB Shore - Clinton Beach, Clinton	(CT-C2_003)	2013
	LIS CB Shore - Outer Clinton Harbor	(CT-C2_004)	2013
	LIS CB Midshore - Duck Island area	(CT-C3_002)	2013
	LIS CB Midshore - Outer Clinton Harbor	(CT-C3_003)	2013

Appendix	Segment Name	305b #	Year Adopted
Estuary 11 New London/ Groton	LIS EB Inner – Beebe Cove (Mystic Harbor)	(CT-E1_009)	2013
	LIS EB Inner Palmer Cove (Inner)	(CT-E1_010)	2013
	LIS EB Inner Mumford Cove (Inner)	(CT-E1_011-SB)	2013
	LIS EB Inner Poquonuck River (Mouth)	(CT-E1_012)	2013
	LIS EB Inner – Baker Cove	(CT-E1_013)	2013
	LIS EB Inner Thames River (Mouth)	(CT-E1_014-SB)	2013
	LIS EB Inner Alewife Cove	(CT-E1_017)	2013
	LIS EB Shore West Cove	(CT-E2_006)	2013
	LIS EB Shore Outer Mumford Cove	(CT-E2_007)	2013
	LIS EB Shore- Bluff Point	(CT-E2_008)	2013
	LIS EB Midshore Mystic River	(CT-E3_003)	2013
	LIS EB Midshore Thames River	(CT-E3_004)	2013
Estuary 12 Stonington	LIS EB Inner – Inner Wequetequock Cove	(CT-E1_003)	2013
	LIS EB Inner – Inner Stonington Harbor	(CT-E1_005)	2013
	LIS EB Inner- Inner Quiambaug Cove	(CT- E1_006)	2013
	LIS EB Shore - Stonington Point	(CT-E2_002)	2013
	LIS EB Shore- Outer Quiambaug Cove	(CT-E2-003)	2013
	LIS EB Shore – Wilcox Cove (Mason Island)	(CT-E2_004)	2013
	LIS EB Shore – Mouth Mystic River (CT-E2_005),	(CT-E2_005)	2013