
Final

Total Maximum Daily Loads

for the

Caloosahatchee River above S-78

WBID 3237A

Nutrients, Dissolved Oxygen & BOD

March 2011



Region4 serving the
southeast

In compliance with the provisions of the Federal Clean Water Act, 33 U.S.C §1251 et. seq., as amended by the Water Quality Act of 1987, P.L. 400-4, the U.S. Environmental Protection Agency is hereby establishing the Total Maximum Daily Load (TMDL) for Nutrients, BOD and Dissolved Oxygen in Caloosahatchee River above S-78 in the Caloosahatchee River Basin (WBID 3237A) Subsequent actions must be consistent with this TMDL.

James D. Giattina, Director
Water Protection Division

Date

Table of Contents

1.	INTRODUCTION.....	1
2.	PROBLEM DEFINITION	1
3.	WATERSHED DESCRIPTION.....	4
4.	WATER QUALITY STANDARDS/TMDL TARGETS.....	4
4.1.	NUTRIENTS:	4
4.2.	DISSOLVED OXYGEN CRITERIA:.....	5
4.3.	NATURAL CONDITIONS	5
5.	WATER QUALITY ASSESSMENT.....	5
5.1.	WATER QUALITY DATA	5
5.1.1.	<i>Caloosahatchee River above S-78.....</i>	<i>6</i>
6.	SOURCE AND LOAD ASSESSMENT	12
6.1.	POINT SOURCES	13
6.1.1.	<i>Municipal Separate Stormwater System Permits.....</i>	<i>13</i>
6.2.	NON POINT SOURCES	14
6.2.1.	<i>Urban Areas</i>	<i>15</i>
6.2.2.	<i>Agriculture.....</i>	<i>16</i>
6.2.3.	<i>Rangeland.....</i>	<i>16</i>
6.2.4.	<i>Upland Forests</i>	<i>16</i>
6.2.5.	<i>Water and Wetlands.....</i>	<i>16</i>
6.2.6.	<i>Barren Land.....</i>	<i>16</i>
6.2.7.	<i>Transportation, Communications and Utilities</i>	<i>16</i>
7.	ANALYTICAL APPROACH	17
7.1.	LOADING SIMULATION PROGRAM C++ (LSPC).....	17

7.2.	WATER QUALITY ANALYSIS SIMULATION PROGRAM (WASP).....	17
7.3.	SCENARIOS.....	18
7.3.1.	Current Condition.....	18
7.3.2.	Natural Condition.....	19
8.	TMDL DETERMINATION.....	21
9.	CRITICAL CONDITIONS AND SEASONAL VARIATION.....	22
9.1.	MARGIN OF SAFETY	22
9.2.	WASTE LOAD ALLOCATIONS	23
9.2.1.	NPDES Dischargers.....	23
9.3.	LOAD ALLOCATIONS.....	23
10.	REFERENCES.....	24

Table of Figures

FIGURE 1	LOCATION MAP CALOOSAHATCHEE RIVER ABOVE S-78	3
FIGURE 2	STATION LOCATIONS FOR WBID: 1790 CALOOSAHATCHEE RIVER ABOVE S-78	7
FIGURE 3	WBID: 3237A CALOOSAHATCHEE RIVER ABOVE S-78 MEASURED DISSOLVED OXYGEN	8
FIGURE 4	WBID: 3237A CALOOSAHATCHEE RIVER ABOVE S-78 MEASURED BOD	9
FIGURE 5	WBID: 3237A CALOOSAHATCHEE RIVER ABOVE S-78 MEASURED TOTAL NITROGEN	10
FIGURE 6	WBID: 3237A CALOOSAHATCHEE RIVER ABOVE S-78 MEASURED TOTAL PHOSPHORUS.....	11
FIGURE 7	WBID: 3237A CALOOSAHATCHEE RIVER ABOVE S-78 MEASURED CHLOROPHYLL A CONCENTRATIONS	12
FIGURE 8	LANDUSE DISTRIBUTION IN CALOOSAHATCHEE RIVER ABOVE S-78 WATERSHED	15
FIGURE 9	DISSOLVED OXYGEN CONCENTRATION TIME SERIES UNDER NATURAL CONDITION	20
FIGURE 10	DISSOLVED OXYGEN CONCENTRATION CUMULATIVE DISTRIBUTION FUNCTION UNDER NATURAL CONDITION	21

Table of Tables

TABLE 1 WATER QUALITY MONITORING STATIONS FOR WBID 3237A: CALOOSAHATCHEE RIVER ABOVE S-78	6
TABLE 2 EXISTING CONDITION ANNUAL AVERAGE MODEL PREDICTIONS	18
TABLE 3 CALOOSAHATCHEE RIVER ABOVE S-78 EXISTING NUTRIENT LOADS (2002-2009).....	19
TABLE 4 NATURAL CONDITION ANNUAL AVERAGE MODEL PREDICTIONS	19
TABLE 5 NATURAL CONDITION ANNUAL AVERAGE NUTRIENT	20
TABLE 6 TMDL LOAD ALLOCATIONS FOR CALOOSAHATCHEE RIVER ABOVE S-78.....	22

SUMMARY SHEET
Total Maximum Daily Load (TMDL)

- 1 303(d) Listed Segment:** WBID: 3237A Caloosahatchee River above S-78
- Major Basin:** Caloosahatchee River Basin
- State:** Florida
- 2 TMDL Endpoints/Targets:** Nutrients, Dissolved Oxygen and BOD
- 3 TMDL Technical Approach:** Calibration of a watershed and water quality model to current conditions, load reduction scenarios to meet water quality standards.

4 TMDL Waste Load and Load Allocation:

Constituent	Current Condition		TMDL Condition		MS4	LA
	WLA (kg/yr)	LA (kg/yr)	WLA (kg/yr)	LA (kg/yr)	% Reduction	% Reduction
Total Nitrogen	NA	886,606	NA	573,058	NA	35%
Total Phosphorus	NA	184,108	NA	129,398	NA	30%
BOD	NA	996,802	NA	611,534	NA	39%

- 5 Endangered Species Present (yes or blank):** No
- 6 USEPA Lead TMDL (USEPA or blank):** USEPA
- 7 TMDL Considers Point Source, Non-point Source, or both:** Non-Point Source
- 8 Major NPDES Discharges to surface waters addressed in USEPA TMDL:** None in Watershed

1. Introduction

Section 303(d) of the Clean Water Act requires each state to list those waters within its boundaries for which technology based effluent limitations are not stringent enough to protect any water quality standard applicable to such waters. Listed waters are prioritized with respect to designated use classifications and the severity of pollution. In accordance with this prioritization, states are required to develop Total Maximum Daily Loads (TMDLs) for those water bodies that are not meeting water quality standards. The TMDL process establishes the allowable loadings of pollutants or other quantifiable parameters for a waterbody based on the relationship between pollution sources and in-stream water quality conditions, so that states can establish water quality based controls to reduce pollution from both point and nonpoint sources and restore and maintain the quality of their water resources (USEPA, 1991).

The State of Florida Department of Environmental Protection (FDEP) developed a statewide, watershed-based approach to water resource management. Under the watershed management approach, water resources are managed on the basis of natural boundaries, such as river basins, rather than political boundaries. The watershed management approach is the framework FDEP uses for implementing TMDLs. The state's 52 basins are divided into five groups. Water quality is assessed in each group on a rotating five-year cycle. Caloosahatchee River Basin is a Group 3 basin; it was designated for TMDL development by a consent decree. FDEP established five water management districts (WMD) responsible for managing ground and surface water supplies in the counties encompassing the districts. Caloosahatchee River above S-78 WBID 3237A is within the South Florida Water Management District (SFWMD).

For the purpose of planning and management, the WMDs divided the district into planning units defined as either an individual primary tributary basin or a group of adjacent primary tributary basins with similar characteristics. These planning units contain smaller, hydrological based units called drainage basins, which are further divided by FDEP into "water segments". A water segment usually contains only one unique waterbody type (stream, lake, canal, etc.) and is about 5 square miles. Unique numbers or waterbody identification (WBIDs) numbers are assigned to each water segment.

2. Problem Definition

Florida's final 1998 Section 303(d) list identified numerous Water Body Identifications. The TMDLs addressed in this document are being established pursuant to commitments made by the United States Environmental Protection Agency (EPA) in the 1998 Consent Decree in the Florida TMDL lawsuit (Florida Wildlife Federation, et al. v. Carol Browner, et al., Civil Action No. 4: 98CV356-WS, 1998). That Consent Decree established a schedule for TMDL development for waters listed on Florida's EPA approved 1998 section 303(d) list. The 1998 section 303(d) list identified numerous Water Body Identifications (WBIDs) in the Caloosahatchee River Basin as not supporting water quality standards (WQS). After assessing all readily available water

quality data, EPA is responsible for developing a TMDL in WBID 3237A Caloosahatchee River above S-78 (Figure 1). The parameters addressed in these TMDLs are Nutrients, Dissolved Oxygen and BOD.

Most waterbodies in Caloosahatchee River Basin are designated as Class III waters having a designated use for recreation, and propagation and maintenance of a healthy, well-balanced population of fish and wildlife. The level of impairment is denoted as threatened, partially or not supporting designated uses. A waterbody that is classified as threatened currently meets WQS but trends indicate the designated use may not be met in the next listing cycle. A waterbody classified as partially supporting designated uses is defined as somewhat impacted by pollution and water quality criteria are exceeded on some frequency. For this category, water quality is considered moderately impacted. A waterbody that is categorized as not supporting is highly impacted by pollution and water quality criteria are exceeded on a regular or frequent basis. In such waterbodies, water quality is considered severely impacted.

To determine the status of surface water quality in the state, three categories of data – chemistry data, biological data, and fish consumption advisories – were evaluated to determine potential impairments. The level of impairment is defined in the Identification of Impaired Surface Waters Rule (IWR), Section 62-303 of the Florida Administrative Code (F.A.C.). The IWR is FDEP’s methodology for determining whether waters should be included on the state’s planning list and verified list. Potential impairments are determined by assessing whether a waterbody meets the criteria for inclusion on the planning list. Once a waterbody is on the planning list, additional data and information will be collected and examined to determine if the water should be included on the verified list.

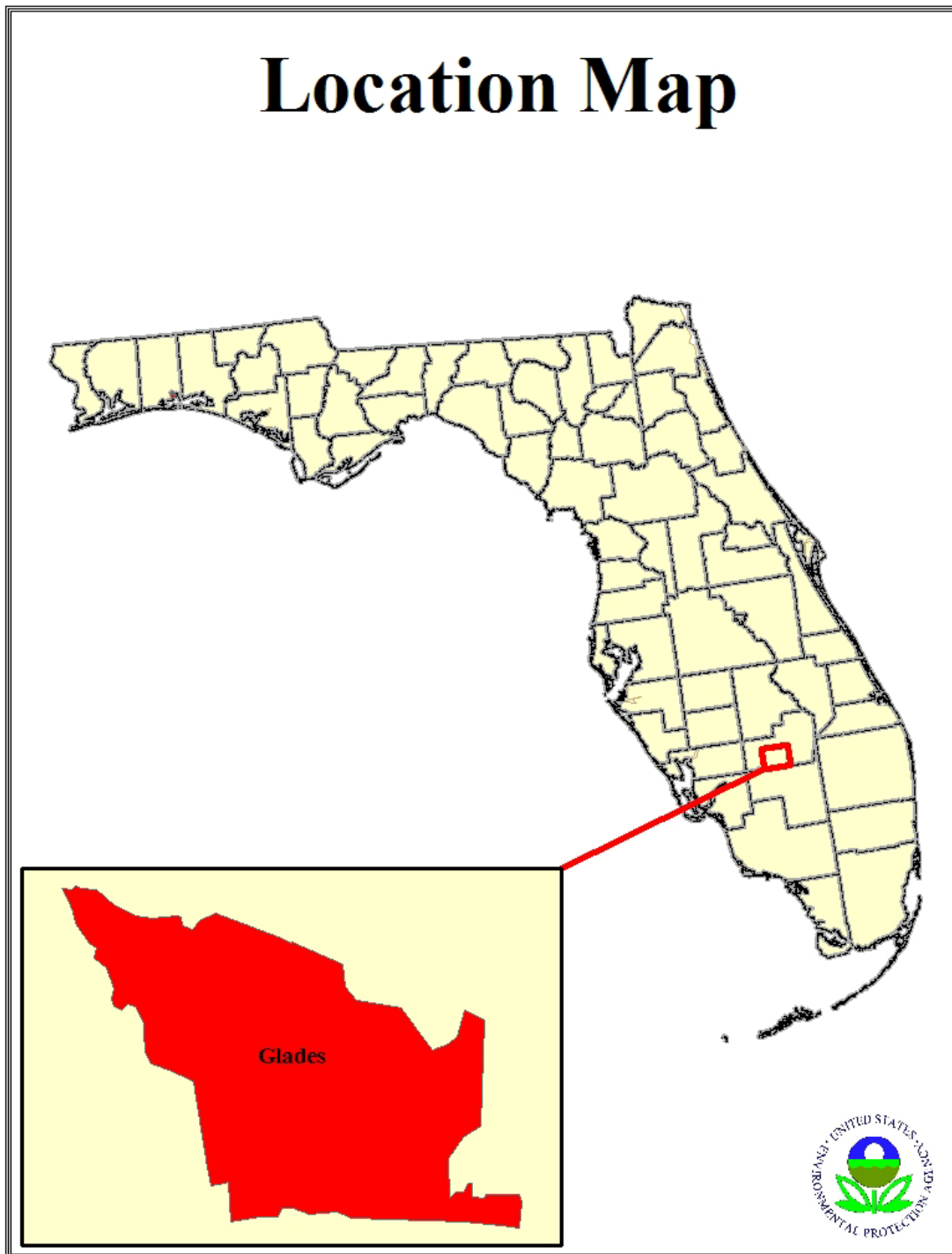


Figure 1 Location Map Caloosahatchee River above S-78

3. Watershed Description

The 257-square-mile Caloosahatchee Estuary Planning Unit, which lies within Lee and Charlotte Counties, contains 13 WBIDs. Waterbodies in the planning unit include the Caloosahatchee River and Estuary; Hancock, Yellow Fever, Daughtrey, Popash, Stroud, Owl, and Caloosahatchee River above S-78s; and numerous residential canals and drainage ditches. The principal communities are Fort Myers, Fort Myers Shores, North Fort Myers, and Cape Coral.

4. Water Quality Standards/TMDL Targets

The waterbodies in the Caloosahatchee River above S-78 WBID are Class III Freshwater with a designated use of Recreation, Propagation and Maintenance of a Healthy, Well-Balanced Population of Fish and Wildlife. Designated use classifications are described in Florida's water quality standards. See Section 62-302.400, F.A.C. Water quality criteria for protection of all classes of waters are established in Section 62-302.530, F.A.C. Individual criteria should be considered in conjunction with other provisions in water quality standards, including Section 62-302.500 F.A.C., which established minimum criteria that apply to all waters unless alternative criteria are specified Section 62-302.530, F.A.C. Several of the WBIDs addressed in this report were listed due to elevated concentrations of chlorophyll *a*. While there is no water quality standard specifically for chlorophyll *a*, elevated levels of chlorophyll *a* are frequently associated with a violation of the narrative nutrient standard, which is described below.

4.1. *Nutrients:*

The designated use of Class III waters is recreation, propagation and maintenance of a healthy, well-balanced population of fish and wildlife. FDEP has not adopted a numeric nutrient criterion for Class III waters. Therefore, the Class III narrative criterion applies to Caloosahatchee River above S-78:

The discharge of nutrients shall continue to be limited as needed to prevent violations of other standards contained in this chapter. Man induced nutrient enrichment (total nitrogen and total phosphorus) shall be considered degradation in relation to the provisions of Section 62-302.300, 62-302.700, and 62-4.242, FAC. 62-302.530(47)(a), F.A.C.

In no case shall nutrient concentrations of a body of water be altered so as to cause an imbalance in natural populations of aquatic flora or fauna. 62-302.530(48)(b), F.A.C.

Because the State of Florida does not have numeric criteria for nutrients, chlorophyll and DO levels are used to indicate whether nutrients are present in excessive amounts.

4.2. Dissolved Oxygen Criteria

Numeric criteria for DO are expressed in terms of minimum and daily average concentrations. Rule 62-302(30), F.A.C., sets out the water quality criterion for the protection of Class III freshwater waters as:

Shall not be less than 5.0 mg/l. Normal daily and seasonal fluctuations above these levels shall be maintained.

4.3. Natural Conditions

In addition to the standards for nutrients, DO and BOD described above, Florida's standards include provisions that address waterbodies which do not meet the standards due to natural background conditions.

Florida's water quality standards provide a definition of natural background:

“Natural Background” shall mean the condition of waters in the absence of man-induced alterations based on the best scientific information available to the Department. The establishment of natural background for an altered waterbody may be based upon a similar unaltered waterbody or on historical pre-alteration data. 62-302.200(15), FAC.

Florida's water quality standards also provide that:

Pollution which causes or contributes to new violations of water quality standards or to continuation of existing violations is harmful to the waters of this State and shall not be allowed. Waters having water quality below the criteria established for them shall be protected and enhanced. However, the Department shall not strive to abate natural conditions. 62-302.300(16) FAC

5. Water Quality Assessment

Caloosahatchee River above S-78 was listed as not attaining its designated uses on Florida's 1998 303(d) list for Dissolved Oxygen.

To determine impairment an assessment of available data was conducted. The source for current ambient monitoring data for WBID 3237A Caloosahatchee River above S-78 was the Impaired Waters Rule (IWR) data Run 40.

5.1. Water Quality Data

The tables and figures below present the station locations and time series data for dissolved oxygen, total nitrogen, total phosphorus, biochemical oxygen demand and chlorophyll a observations for Caloosahatchee River above S-78.

5.1.1. Caloosahatchee River above S-78

Table 1 provides a list of the water quality monitoring stations in the Caloosahatchee River above S-78 WBID including the date range of the observations and the number of observations.

Table 1 Water Quality Monitoring Stations for WBID 3237A: Caloosahatchee River above S-78

Station	Station Name	First Date	Last Date	No. Obs.
112WRD 02292480	CALOOSAHATCHEE CANAL AT ORTONA LOCK NR LA BELLE	10/20/1999 11:30	10/20/1999 11:30	5
21FLFTM 28020020	CALOOSAHATCHEE R ORTONA LOCK MID	2/23/1999 11:00	1/24/2000 13:00	99
21FLFTM 29417	Caloosahatchee Rvr 2.5 Miles East of Ortona Lock	6/22/2009 11:03	6/22/2009 11:03	3
21FLFTM 29418	Caloosahatchee Rvr 7.7 Miles West of Moorehaven Lock	6/22/2009 11:28	6/22/2009 11:28	3
21FLFTM 29420	Caloosahatchee Rvr 9.3 Miles West of Moorehaven Lock	6/22/2009 11:20	6/22/2009 11:20	3
21FLFTM CALUSA0018FTM	Caloosahatchee R. @ Caloosa Boat Storage - WB 3237A	1/29/2008 10:17	6/22/2009 11:08	74
21FLFTM CR-135	Caloosahatchee Rvr 13.5 Miles West of Moorehaven Lock	6/22/2009 10:55	6/22/2009 10:55	3
21FLFTM S78	Caloosahatchee Rvr Upstream of Ortona Lock	6/22/2009 10:46	6/22/2009 10:46	3
21FLGW 10306	SFD-LS-1031 UNKNOWN	8/15/2001 10:20	8/15/2001 10:20	10
21FLGW 10319	SFD-LS-1089 UNKNOWN	8/15/2001 12:20	8/15/2001 12:20	10
21FLGW 29416	SF3-LR-2017 CALOOSAHATCHEE RIVER	6/1/2006 11:28	6/1/2006 11:30	11
21FLGW 29417	SF3-LR-2003 CALOOSAHATCHEE RIVER	6/1/2006 12:43	6/1/2006 12:45	11
21FLGW 29418	SF3-LR-2015 CALOOSAHATCHEE RIVER	6/14/2006 12:43	6/14/2006 12:45	8
21FLGW 29419	SF3-LR-2019 CALOOSAHATCHEE RIVER	6/15/2006 10:28	6/15/2006 10:30	11
21FLGW 29420	SF3-LR-2030 CALOOSAHATCHEE RIVER	6/15/2006 11:48	6/15/2006 11:50	11
21FLGW 29421	SF3-LR-2024 CALOOSAHATCHEE RIVER	6/22/2006 10:38	6/22/2006 10:40	11
21FLGW 29422	SF3-LR-2010 CALOOSAHATCHEE RIVER	6/22/2006 11:58	6/22/2006 12:00	11
21FLSFWMS78	S-78 SPILLWAY & LOCK ON CALOOSAHATCHEE RIVER ORT A	1/13/1997 13:30	3/16/2009 11:48	663

Figure 2 illustrates where the IWR stations are located within the WBID.

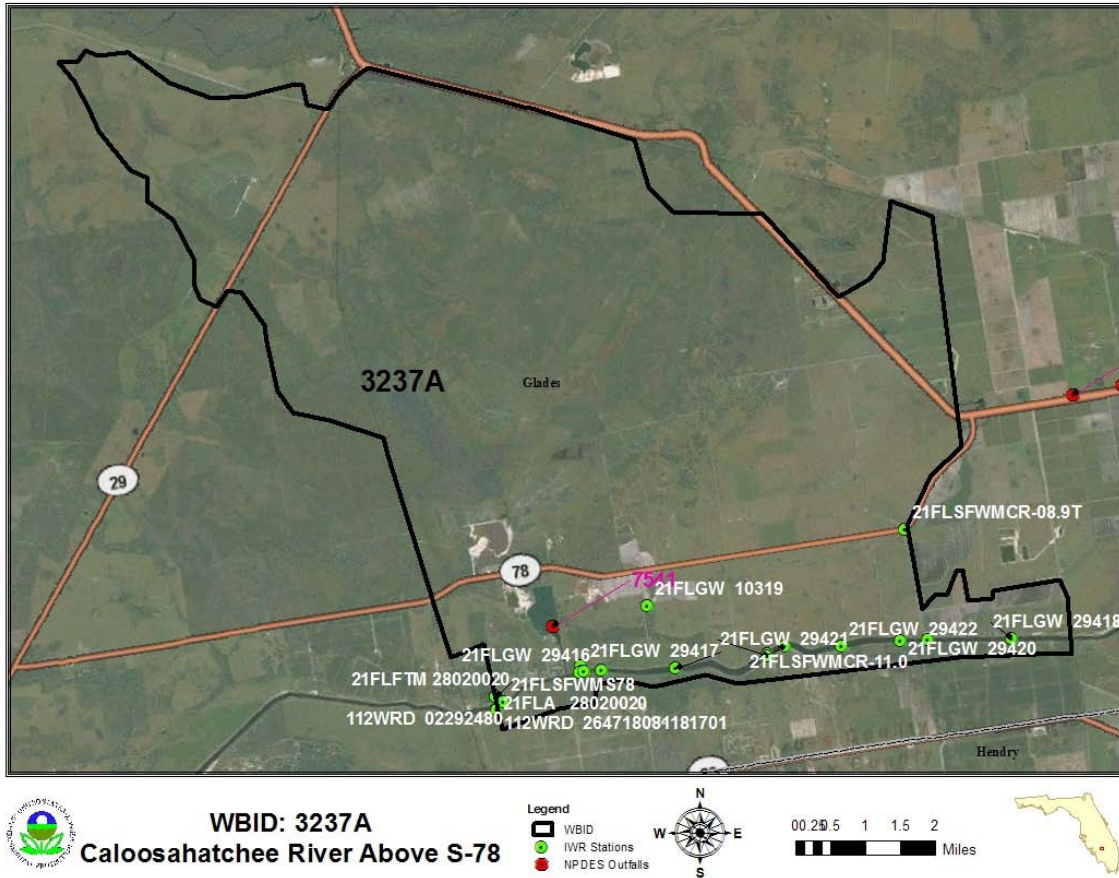


Figure 2 Station Locations for WBID: 1790 Caloosahatchee River above S-78

Dissolved Oxygen

Figure 3 provides a time series plot for the measured dissolved oxygen concentrations in Caloosahatchee River above S-78. There were 14 monitoring stations used in the assessment that included a total of 77 observations of which 27 (35%) fell below the water quality standard of 5 mg/l dissolved oxygen. The minimum value was 1.3 mg/l, the maximum was 9.1 mg/l and the average was 5.7 mg/l.

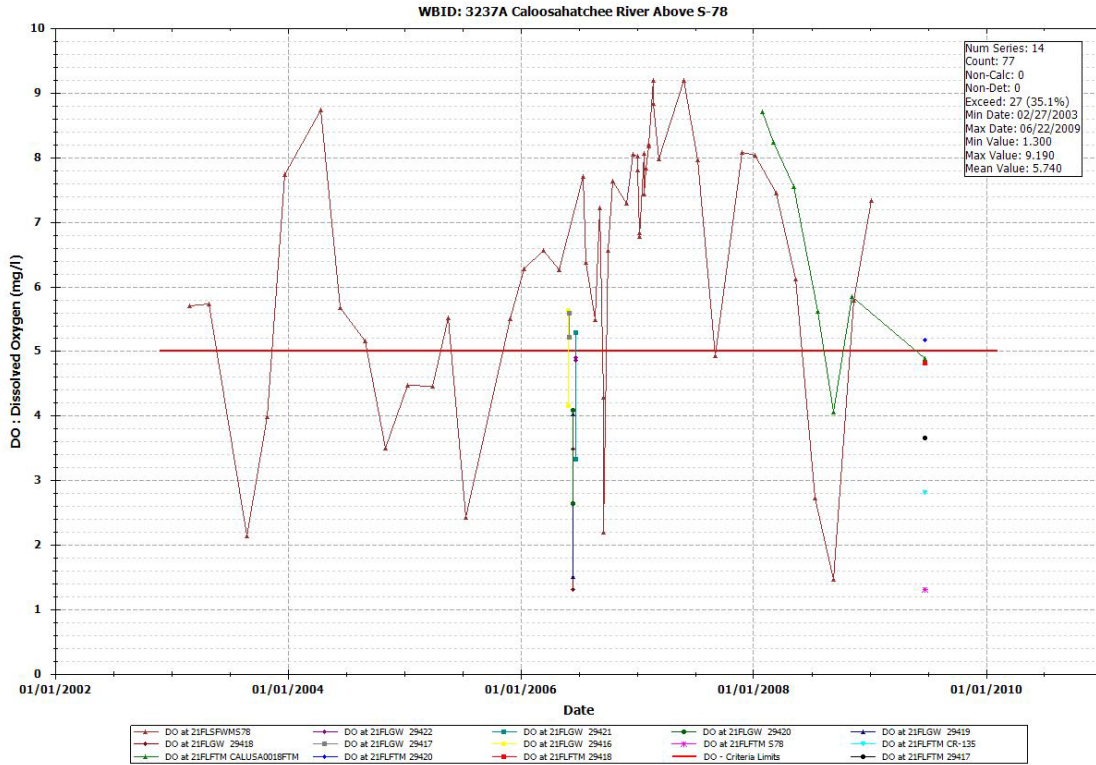


Figure 3 WBID: 3237A Caloosahatchee River above S-78 Measured Dissolved Oxygen

Biochemical Oxygen Demand

Figure 4 provides a time series plot for the measured BOD concentrations in Caloosahatchee River above S-78. There were 6 monitoring stations used in the assessment that included a total of 12 observations. The minimum value was 0.4 mg/l, the maximum was 5.5 mg/l and the average was 2.47 mg/l.

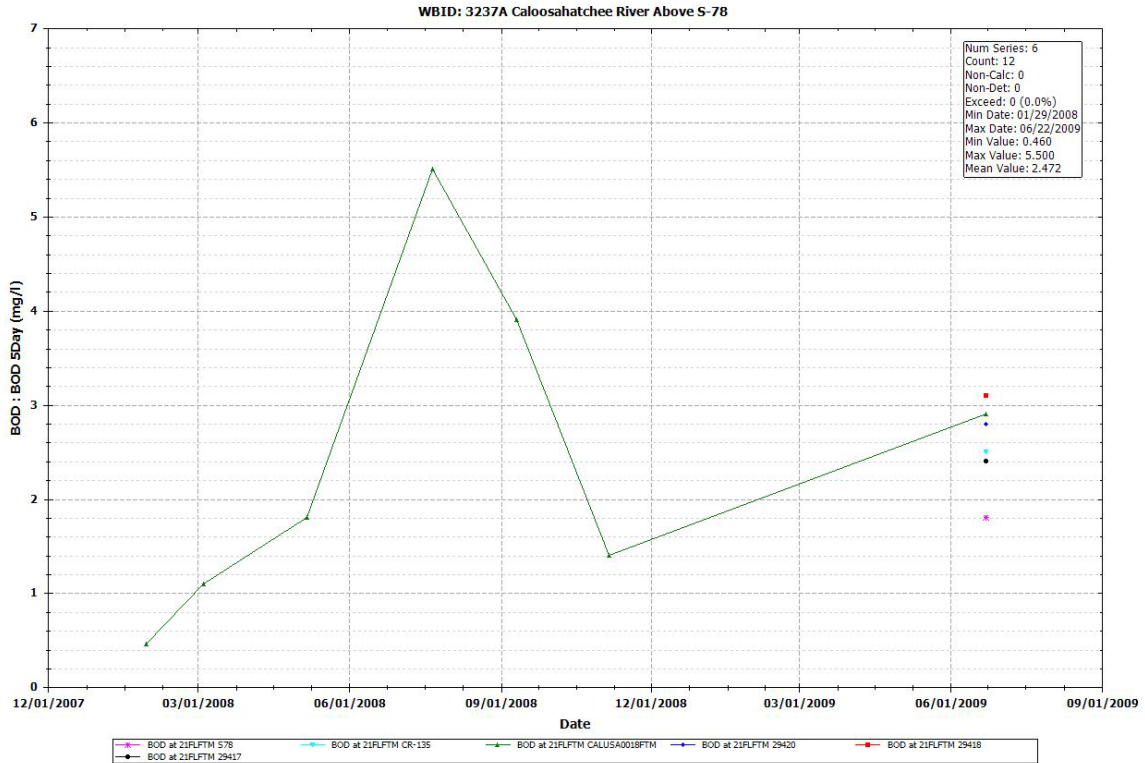


Figure 4 WBID: 3237A Caloosahatchee River above S-78 Measured BOD

Nutrients

For the nutrient assessment the monitoring data for total nitrogen, total phosphorus and chlorophyll a are presented. While Florida is currently working on the development and promulgation of numeric nutrient criteria, the current standards for nutrients are narrative criteria. The purpose of the nutrient assessment is to present the range, variability and average conditions for the WBID.

Total Nitrogen

Figure 5 provides a time series plot for the measured total nitrogen concentrations in Caloosahatchee River above S-78. There were 8 monitoring stations used in the assessment that included a total of 48 observations. The minimum value was 1.0 mg/l, the maximum was 2.28 mg/l and the average was 1.43 mg/l.

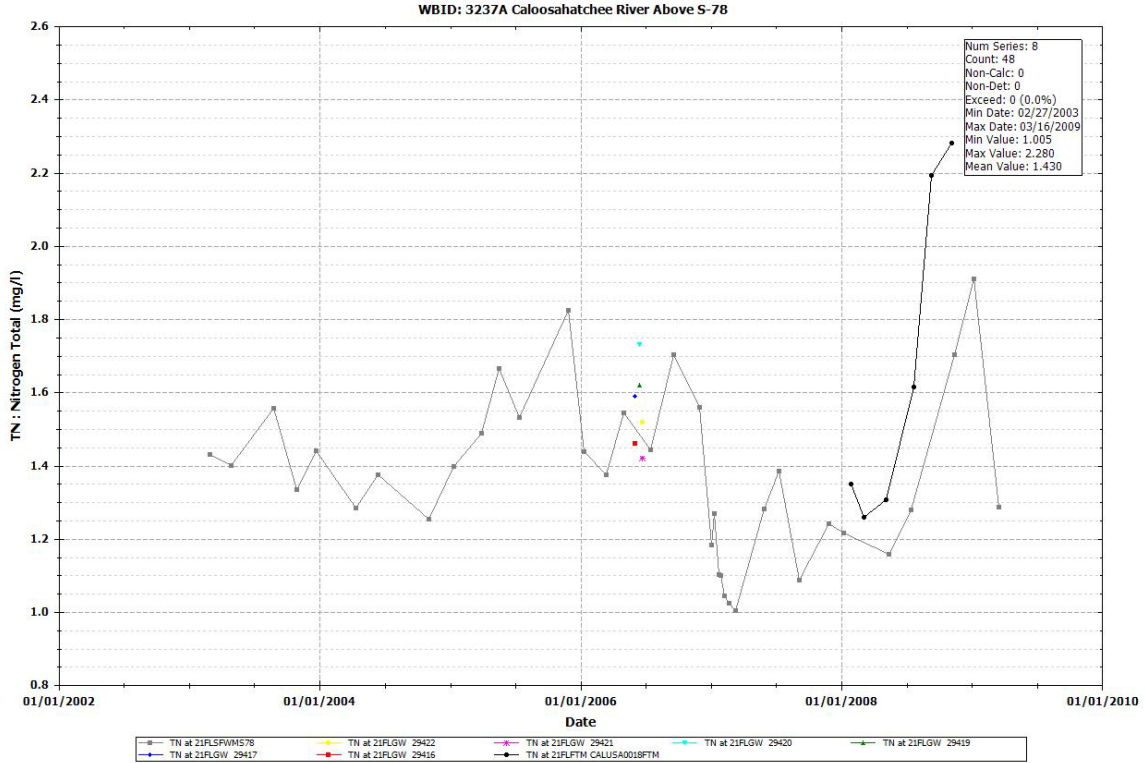


Figure 5 WBID: 3237A Caloosahatchee River above S-78 Measured Total Nitrogen

Total Phosphorus

Figure 6 provides a time series plot for the measured total phosphorus concentrations in Caloosahatchee River above S-78. There were 8 monitoring stations used in the assessment that included a total of 50 observations. The minimum value was 0.05 mg/l, the maximum was 0.32 mg/l and the average was 0.129 mg/l.

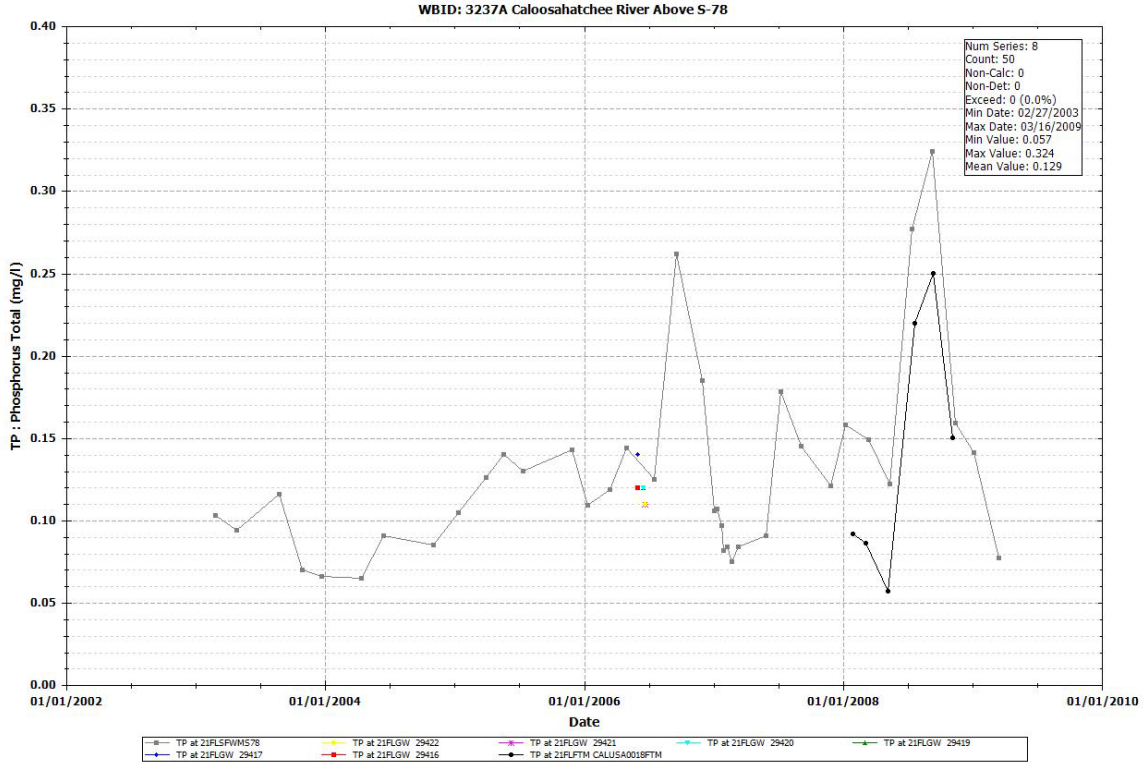


Figure 6 WBID: 3237A Caloosahatchee River above S-78 Measured Total Phosphorus

Chlorophyll a

Figure 7 provides a time series plot for corrected chlorophyll a concentrations in Caloosahatchee River above S-78. There were 9 monitoring stations used in the assessment that included a total of 25 observations. The minimum value was 1.00 µg/l, the maximum was 46 µg/l and the average was 6.4 µg/l.

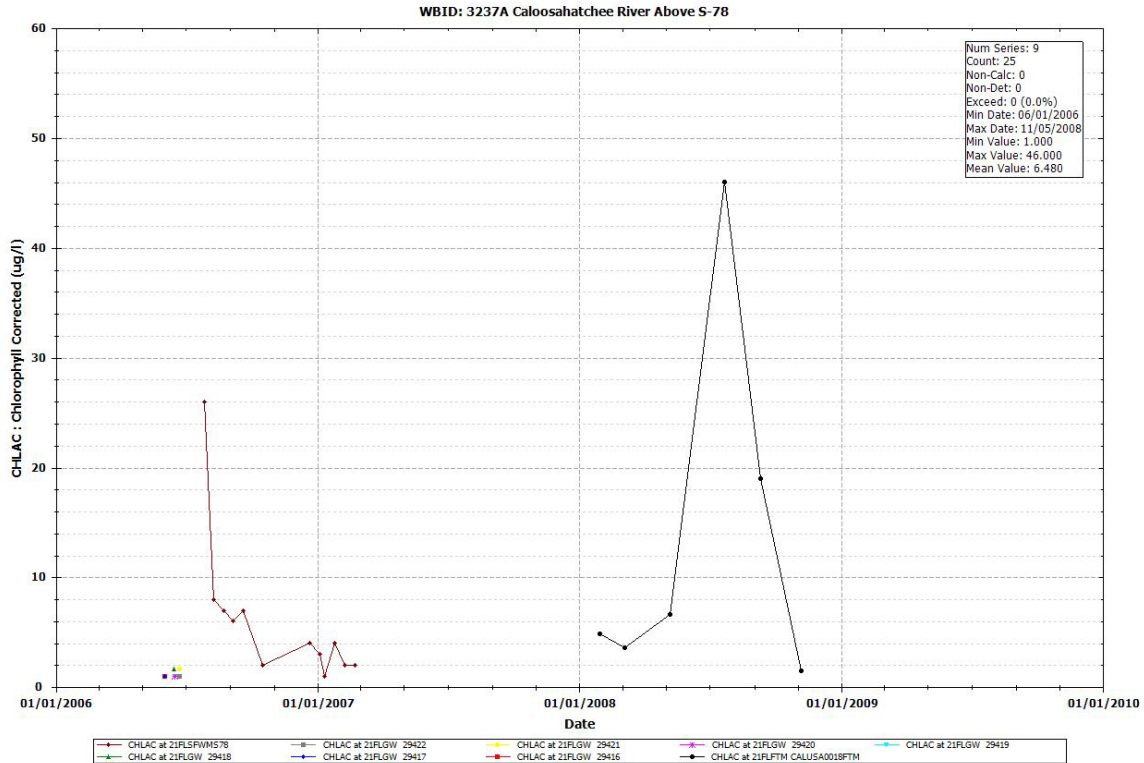


Figure 7 WBID: 3237A Caloosahatchee River above S-78 Measured Chlorophyll a Concentrations

6. Source and Load Assessment

An important part of the TMDL analysis is the identification of source categories, source subcategories, or individual sources of pollutants in the watershed and the amount of loading contributed by each of these sources. Sources are broadly classified as either point or nonpoint sources. Nutrients can enter surface waters from both point and nonpoint sources. A point source is defined as a discernable, confined, and discrete conveyance from which pollutants are or may be discharged to surface waters. Point source discharges of industrial wastewater and treated sanitary wastewater must be authorized by National Pollutant Discharge Elimination System (NPDES) permits. NPDES permitted discharges include continuous discharges such as wastewater treatment facilities as well as some stormwater driven sources such as municipal separate stormwater systems (MS4 areas), certain industrial facilities, and construction sites over one acre.

Nonpoint sources of pollution are diffuse sources that cannot be identified as entering a waterbody through a discrete conveyance at a single location. For nutrients, these sources include runoff of agricultural fields, golf courses, and lawns, septic tanks, and residential developments outside of MS4 areas. Nonpoint sources generally, but not always, involve accumulation of nutrients on land surfaces and wash-off as a result of rainfall events.

6.1. Point Sources

Point source facilities are permitted through the Clean Water Act National Pollutant Discharge Elimination System (NPDES) Program. There is no continuous discharge NPDES permitted point sources in the Caloosahatchee River above S-78 Watershed.

6.1.1. Municipal Separate Stormwater System Permits

Municipal Separate Stormwater Systems (MS4s) are point sources also regulated by the NPDES program. According to 40 CFR 122.26(b)(8), a municipal separate storm sewer (MS4) is “a conveyance or system of conveyances (including roads with drainage systems, municipal streets, catch basins, curbs, gutters, ditches, man-made channels, or storm drains):

- (i) Owned or operated by a State, city, town, borough, county, parish, district, association, or other public body (created by or pursuant to State law)...including special districts under State law such as a sewer district, flood control district or drainage district, or similar entity, or an Indian tribe or an authorized Indian tribal organization, or a designated and approved management agency under section 208 of the Clean Water Act that discharges into waters of the United States.
- (ii) Designed or used for collecting or conveying storm water;
- (iii) Which is not a combined sewer; and
- (iv) Which is not part of a Publicly Owned Treatment Works.”

Municipal Separate Storm Sewer Systems (MS4s) may discharge nutrients and other pollutants to waterbodies in response to storm events. In 1990, USEPA developed rules establishing Phase I of the National Pollutant Discharge Elimination System (NPDES) stormwater program, designed to prevent harmful pollutants from being washed by stormwater runoff into Municipal Separate Storm Sewer Systems (MS4s) (or from being dumped directly into the MS4) and then discharged from the MS4 into local waterbodies. Phase I of the program required operators of “medium” and “large” MS4s (those generally serving populations of 100,000 or greater) to implement a stormwater management program as a means to control polluted discharges from MS4s. Approved stormwater management programs for medium and large MS4s are required to address a variety of water quality related issues including roadway runoff management, municipal owned operations, hazardous waste treatment, etc.

Phase II of the rule extends coverage of the NPDES stormwater program to certain “small” MS4s. Small MS4s are defined as any MS4 that is not a medium or large MS4 covered by Phase I of the NPDES stormwater program. Only a select subset of small MS4s, referred to as “regulated small MS4s”, requires an NPDES stormwater permit. Regulated small MS4s are defined as all small MS4s located in “urbanized areas” as

defined by the Bureau of the Census, and those small MS4s located outside of “urbanized areas” that are designated by NPDES permitting authorities.

There are no permitted MS4s in the Caloosahatchee River above S-78 watershed.

6.2. Non Point Sources

Nonpoint source pollution generally involves a buildup of pollutants on the land surface that wash off during rain events and as such, represent contributions from diffuse sources, rather than from a defined outlet. Potential nonpoint sources are commonly identified, and their loads estimated, based on land cover data. Most methods calculate nonpoint source loadings as the product of the water quality concentration and runoff water volume associated with certain land use practices. The mean concentration of pollutants in the runoff from a storm event is known as the Event Mean Concentration, or EMC.

Figure 8 provides the landuse distribution for the Caloosahatchee River above S-78 watershed which contains WBID 3237A. The latest landuse coverage's were obtained from the Florida Department of the Environment (FDEP) FTP site. The landuses are described using the Florida Landuse Classification Code (FLUCC) Level 1. The predominant landuse draining directly to Caloosahatchee River above S-78 is agriculture (67%).

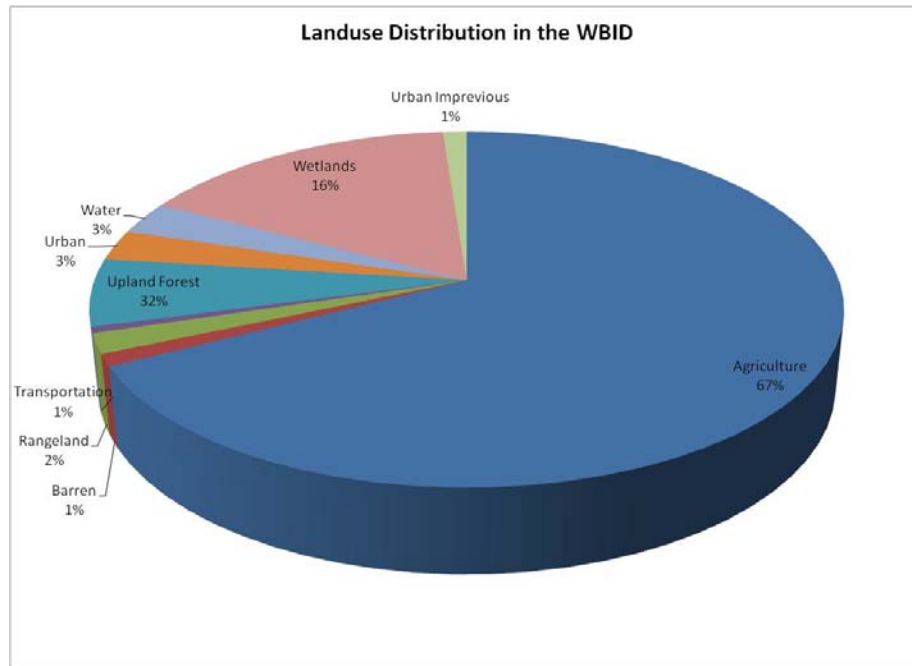


Figure 8 Landuse Distribution in Caloosahatchee River above S-78 Watershed

6.2.1. Urban Areas

Urban areas include land uses such as residential, industrial, extractive and commercial. Land uses in this category typically have somewhat high total nitrogen event mean concentrations and average total phosphorus event mean concentrations. Nutrient loading from MS4 and non-MS4 urban areas is attributable to multiple sources including stormwater runoff, leaks and overflows from sanitary sewer systems, illicit discharges of sanitary waste, runoff from improper disposal of waste materials, leaking septic systems, and domestic animals.

In 1982, Florida became the first state in the country to implement statewide regulations to address the issue of nonpoint source pollution by requiring new development and redevelopment to treat stormwater before it is discharged. The Stormwater Rule, as outlined in Chapter 403 Florida Statutes (F.S.), was established as a technology-based program that relies upon the implementation of BMPs that are designed to achieve a specific level of treatment (i.e., performance standards) as set forth in Chapter 62-40, F.A.C.

Florida's stormwater program is unique in having a performance standard for older stormwater systems that were built before the implementation of the Stormwater Rule in 1982. This rule states: "the pollutant loading from older stormwater management systems shall be reduced as needed to restore or maintain the beneficial uses of water" (Section 62-4-.432 (5)(c), F.A.C.).

Nonstructural and structural BMPs are an integral part of the State's stormwater programs. Nonstructural BMPs, often referred to as "source controls", are those that can be used to prevent the generation of nonpoint source pollutants or to limit their transport off-site. Typical nonstructural BMPs include public education, land use management, preservation of wetlands and floodplains, and minimization of impervious surfaces. Technology-based structural BMPs are used to mitigate the increased stormwater peak discharge rate, volume, and pollutant loadings that accompany urbanization.

6.2.2. Agriculture

Agricultural lands include improved and unimproved pasture, row and field crops, citrus, and specialty farms. The highest total nitrogen and total phosphorus event mean concentrations are associated with agricultural land uses.

6.2.3. Rangeland

Rangeland includes herbaceous, scrub, disturbed scrub and coastal scrub areas. Event mean concentrations for rangeland are about average for total nitrogen and low for total phosphorus.

6.2.4. Upland Forests

Upland forests include flatwoods, oak, various types of hardwoods, conifers and tree plantations. Event mean concentrations for upland forests are low for both total nitrogen and total phosphorus.

6.2.5. Water and Wetlands

These occur throughout the watershed and have very low event mean concentrations down to zero.

6.2.6. Barren Land

Barren land includes beaches, borrow pits, disturbed lands and fill areas. Barren lands comprise only a small portion of the watershed. Event mean concentrations for barren lands tend to be higher in total nitrogen.

6.2.7. Transportation, Communications and Utilities

Transportation uses include airports, roads and railroads. Event mean concentrations for these types of uses are in the mid-range for total nitrogen and total phosphorus.

7. Analytical Approach

In the development of a TMDL there needs to be a method for relating current loadings to the observed water quality problem. This relationship could be: statistical (regression for a cause and effect relationship), empirical (based on observations not necessarily from the waterbody in question) or mechanistic (physically and/or stochastically based) that inherently relate cause and effect using physical and biological relationships.

Two mechanistic models were used in the development of the TMDL for Caloosahatchee River above S-78. The first model is a dynamic watershed model that predicts the quantity of water and pollutants that are associated with runoff from rain events. The second model is a dynamic water quality model that is capable of integrating the loadings from the watershed model to predict the water quality in the receiving waterbody.

The period of simulation that was considered in the development of this TMDL is January 1, 2002 to January 1, 2009. The models were used to predict time series for total nitrogen, total phosphorus, BOD, dissolved oxygen, and chlorophyll a. The models were calibrated to current conditions and were then used to predict improvements in water quality as function of reductions in loadings

More details on the model application in the development of the Caloosahatchee River above S-78 TMDL are presented in Appendix A.

7.1. Loading Simulation Program C++ (LSPC)

LSPC is the Loading Simulation Program in C++, a watershed modeling system that includes streamlined Hydrologic Simulation Program Fortran (HSPF) algorithms for simulating hydrology, sediment, and general water quality overland as well as a simplified stream fate and transport model. LSPC is derived from the Mining Data Analysis System (MDAS), which was originally developed by EPA Region 3 (under contract with Tetra Tech) and has been widely used for TMDLs. In 2003, the U.S. Environmental Protection Agency (EPA) Region 4 contracted with Tetra Tech to refine, streamline, and produce user documentation for the model for public distribution. LSPC was developed to serve as the primary watershed model for the EPA TMDL Modeling Toolbox.

LSPC will be used to simulate runoff (flow, total nitrogen, total phosphorus and BOD) from the land surface using a daily timestep for current and natural conditions of the Caloosahatchee River above S-78 watershed. The predicted timeseries will be used as boundary conditions for the receiving waterbody model to predict in-stream and in-lake water quality.

7.2. Water Quality Analysis Simulation Program (WASP)

The Water Quality Analysis Simulation Program (WASP7), is a dynamic compartment-modeling program for aquatic systems, including both the water column and the

underlying benthos. The time-varying processes of advection, dispersion, point and diffuse mass loading and boundary exchange are represented in the basic program. The conventional pollutant model within the WASP framework is capable of predicting time varying concentrations for chlorophyll a, dissolved oxygen, nutrients (nitrogen, phosphorus) as function of loadings, flows, and environmental conditions.

WASP was calibrated to the current conditions of the Caloosahatchee River above S-78 watershed using known meteorology, predicted loadings from the LSPC model and constrained by observed data in Caloosahatchee River above S-78. Furthermore, WASP was used in determining the load reductions that would be needed to achieve the water quality standards and nutrient targets for Caloosahatchee River above S-78.

7.3. Scenarios

Several modeling scenarios were developed and evaluated in this TMDL determination. A full description of each of these scenarios is presented in Appendix A.

7.3.1. Current Condition

The first scenario is to model the current conditions of the watershed. This included the development of a watershed and water quality model. The watershed model is parameterized using the current landuses and measured meteorological conditions to predict the current loadings of nitrogen, phosphorus and BOD. These predicted loadings and flow time series are passed on to the water quality model where the predicted algal, nitrogen, phosphorus, BOD and dissolved oxygen concentrations are predicted over time. The models (watershed and water quality) are calibrated to a seven year period of time to take into account varying environmental, meteorological or hydrological conditions on water quality. The existing condition annual average concentrations are presented in Table 2.

Table 2 Existing Condition Annual Average Model Predictions

Constituent	Existing
Total Nitrogen (mg/L)	1.113
Total Phosphorus (mg/L)	0.154
BOD (mg/L)	2.218
DO (mg/L)	5.954
Chlorophyll a (ug/L)	2.434

The current condition simulation will be used to determine the base loadings for the Caloosahatchee River above S-78. These base loadings (Table 3) compared with the TMDL scenario will be used to determine the percent reduction in nutrient loads that will be needed to achieve water quality standards.

Table 3 Caloosahatchee River above S-78 Existing Nutrient Loads (2002-2009)

Constituent	Existing Condition	
	WLA (kg/yr)	LA (kg/yr)
Total Nitrogen	NA	886,606
Total Phosphorus	NA	184,108
BOD	NA	996,802

7.3.2. Natural Condition

The natural condition scenario is developed to estimate what water quality conditions would exist if there were little to no impact from anthropogenic sources. There are no point source dischargers in the Caloosahatchee River above S-78 watershed. For the purpose of this analysis any landuse that is associated with man induced activities (urban, agriculture, transportation, barren lands and rangeland) is converted to upland forests and the associated event mean concentration for nitrogen, phosphorus and BOD are used. These natural condition loadings from the watershed model are passed onto the water quality model where natural water quality conditions are predicted. The natural condition water quality predictions are presented in Table 4.

Table 4 Natural Condition Annual Average Model Predictions

Constituent	Natural Condition
Total Nitrogen (mg/L)	1.04
Total Phosphorus (mg/L)	0.12
BOD (mg/L)	1.78
DO (mg/L)	6.85
Chlorophyll a (ug/L)	2.43

The purpose of the natural conditions scenario is determine whether water quality standards can be achieved without abating the naturally occurring loads from the watershed. The dissolved oxygen standard is not achievable under natural conditions. Therefore the TMDL determination will set the allowable loads to the natural condition scenario.

Table 5 provides the annual average load predictions for total nitrogen, total phosphorus, and dissolved oxygen.

Table 5 Natural Condition Annual Average Nutrient

Constituent	Natural Condition	
	WLA (kg/yr)	LA (kg/yr)
Total Nitrogen	NA	573,058
Total Phosphorus	NA	129,398
BOD	NA	611,534

Figure 9 provides a time series of dissolved oxygen concentrations under natural conditions. The model predicts approximately 14% exceedences of the dissolved oxygen criteria.

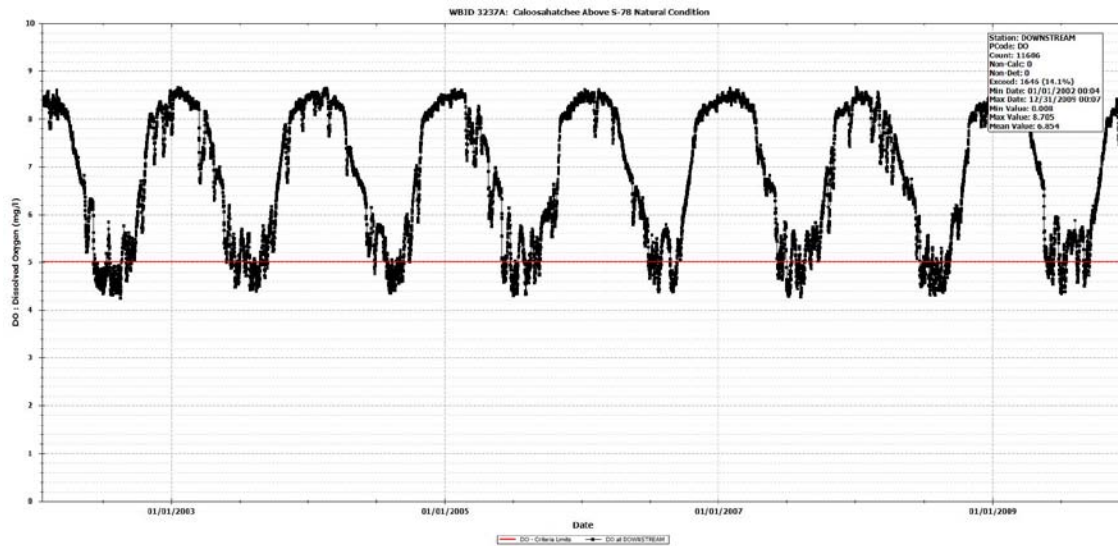


Figure 9 Dissolved Oxygen Concentration Time Series under Natural Condition

Figure 10 provides a cumulative distribution function of the dissolved oxygen concentrations under natural conditions.

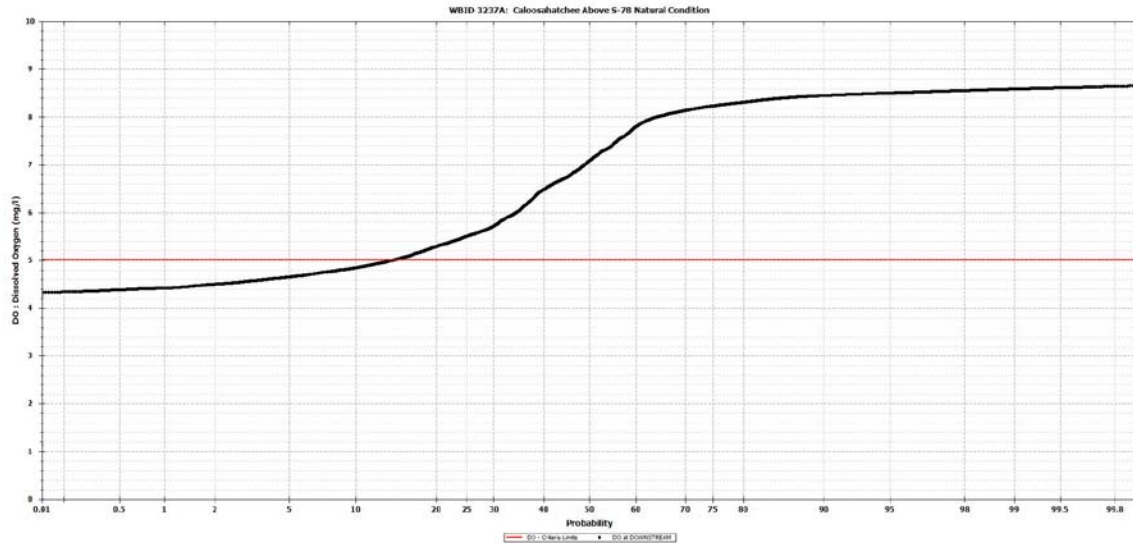


Figure 10 Dissolved Oxygen Concentration Cumulative Distribution Function under Natural Condition

8. TMDL Determination

A total maximum daily load (TMDL) for a given pollutant and waterbody is comprised of the sum of individual wasteload allocations (WLAs) for point sources, and load allocations (LAs) for both nonpoint sources and natural background levels. In addition, the TMDL must include a margin of safety (MOS), either implicitly or explicitly, to account for the uncertainty in the relationship between pollutant loads and the quality of the receiving waterbody. Conceptually, this definition is represented by the equation:

$$\text{TMDL} = \sum \text{WLAs} + \sum \text{LAs} + \text{MOS}$$

The TMDL is the total amount of pollutant that can be assimilated by the receiving waterbody and still achieve water quality standards and the waterbody's designated use. In TMDL development, allowable loadings from all pollutant sources that cumulatively amount to no more than the TMDL must be set and thereby provide the basis to establish water quality-based controls. These TMDLs are expressed as annual mass loads, since the approach used to determine the TMDL targets relied on annual loadings. The TMDLs targets were determined to be the conditions needed to restore and maintain a balanced aquatic system. Furthermore, it is important to consider nutrient loading over time, since nutrients can accumulate in waterbodies.

The TMDL determined that the natural condition scenario (removal of all anthropogenic sources and landuses) determined the State's dissolved oxygen standard would not be met. The reductions prescribed in this TMDL reduce the current loadings to the natural condition.

The TMDL was determined for the loadings coming from the upstream watershed and watershed that directly drains to Caloosahatchee River above S-78. The allocations are given in Table 6.

Table 6 TMDL Load Allocations for Caloosahatchee River above S-78

Constituent	Current Condition		TMDL Condition		MS4	LA
	WLA (kg/yr)	LA (kg/yr)	WLA (kg/yr)	LA (kg/yr)	% Reduction	% Reduction
Total Nitrogen	NA	886,606	NA	573,058	NA	35%
Total Phosphorus	NA	184,108	NA	129,398	NA	30%
BOD	NA	996,802	NA	611,534	NA	39%

9. Critical Conditions and Seasonal Variation

EPA regulations at 40 CFR 130.7(c)(1) require TMDLs to take into account critical conditions for stream flow, loading, and water quality parameters. The critical condition is the combination of environmental factors creating the "worst case" scenario of water quality conditions in the waterbody. By achieving the water quality standards at critical conditions, it is expected that water quality standards should be achieved during all other times. Seasonal variation must also be considered to ensure that water quality standards will be met during all seasons of the year, and that the TMDLs account for any seasonal change in flow or pollutant discharges, and any applicable water quality criteria or designated uses (such as swimming) that are expressed on a seasonal basis.

The critical condition for nonpoint source loadings and wet weather point source loadings is typically an extended dry period followed by a rainfall runoff event. During the dry weather period, nutrients build up on the land surface, and are washed off by rainfall. The critical condition for continuous point source loading typically occurs during periods of low stream flow when dilution is minimized. Although loading of nonpoint source pollutants contributing to a nutrient impairment may occur during a runoff event, the expression of that nutrient impairment is more likely to occur during warmer months, and at times when the waterbody is poorly flushed. Because of the eight year simulation period used in the model development, the model encompasses both critical and seasonal variations to determine the annual average allowable load.

9.1. Margin of Safety

The Margin of Safety accounts for uncertainty in the relationship between a pollutant load and the resultant condition of the waterbody. There are two methods for incorporating a MOS into TMDLs (USEPA, 1991):

- Implicitly incorporate the MOS using conservative model assumptions to develop allocations

- Explicitly specify a portion of the total TMDL as the MOS and use the remainder for Allocations

This TMDL uses an implicit margin of safety as a TMDL targets for nutrients were set to natural background conditions.

9.2. Waste Load Allocations

Only MS4s and NPDES facilities discharging directly into lake segments (or upstream tributaries of those segments) are assigned a WLA. The WLAs, if applicable, are expressed separately for continuous discharge facilities (e.g., WWTPs) and MS4 areas, as the former discharges during all weather conditions whereas the later discharges in response to storm events.

9.2.1. NPDES Dischargers

Point source facilities are permitted through the Clean Water Act National Pollutant Discharge Elimination System (NPDES) Program. There is no continuous discharge NPDES permitted point sources in the Caloosahatchee River above S-78 Watershed.

9.3. Load Allocations

The load allocation for nonpoint sources was assigned a percent reduction from the current loadings coming into Caloosahatchee River above S-78.

10. References

Florida Administrative Code. Chapter 62-302, Surface Water Quality Standards.

Florida Administrative Code. Chapter 62-303, Identification of Impaired Surface Waters.

Harper, H. H. 1993. Stormwater loading rate parameters for Central and South Florida. Environmental Research & Design, Inc. Orlando, FL.

Keenan, L. W., E. F. Lowe, and D. R. Dobberfuhl. 2003. Pollutant load reduction goals for the Upper St. Johns River Basin. St. Johns River Water Management District, Division of Environmental Sciences, Palatka, FL.